



ADDITIONAL WALKER CATALOGS:

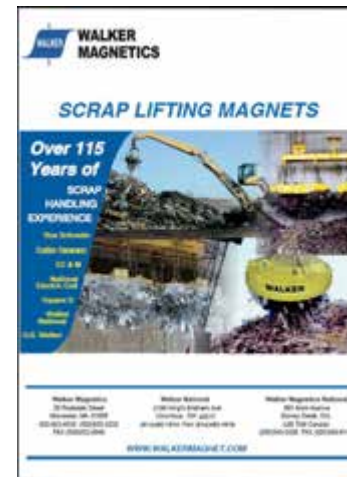
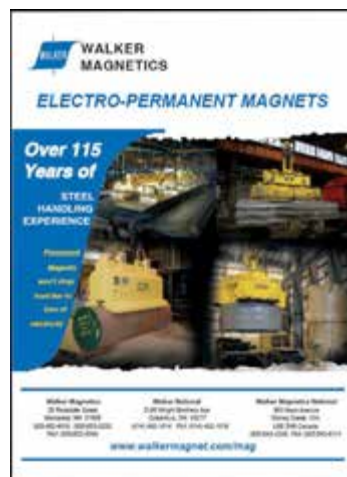
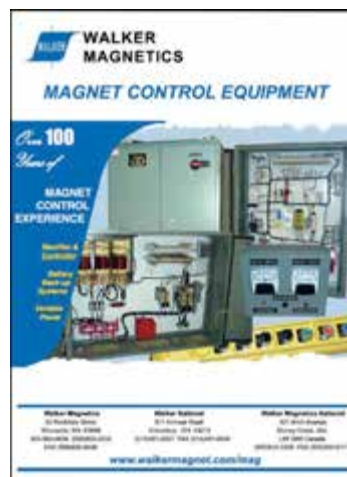
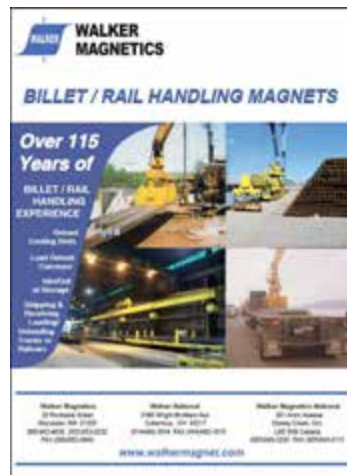


PLATE HANDLING MAGNETS

Over 116 Years of

PLATE HANDLING EXPERIENCE

Plate Storage
Vertical &
Horizontal

Load / Unload
Trucks

Load & Clear
Cutting Tables

Shipping &
Receiving



Walker Magnetics
60 Solferino St.
Worcester, MA 01604
800-962-4638 (508)853-3232
FAX (508)852-8649

Walker National
2195 Wright Brothers Ave
Columbus, OH 43217
(614)492-1614 FAX (614)492-1618

Walker Magnetics National
901 Arvin Avenue
Stoney Creek, Ont.
L8E 5N9 Canada
(905)643-3338 FAX (905)643-6111

Walker Magnetics
60 Solferino St.
Worcester, MA 01604
800-962-4638 (508)853-3232
FAX (508)852-8649

Walker National
2195 Wright Brothers Ave
Columbus, OH 43217
(614)492-1614 FAX (614)492-1618

Walker Magnetics National
901 Arvin Avenue
Stoney Creek, Ont.
L8E 5N9 Canada
(905)643-3338 FAX (905)643-6111

www.walkermagnet.com

www.walkermagnet.com



Load Cutting Tables



Clear Cutting Tables



Handle Multiple Plates



Unloading Rail Cars



Multiple Plates with Telescoping Beam



Store Plates Vertically



Electro-Permanent



Telescoping Beams

RL SERIES

Rectangular Series RL Magnets are designed to lift plates, slabs and billets of all sizes.

RL's are found in shipyards, metal working plants and service centers moving large plates to and from cutting tables, fabricating areas, welding departments and receiving and shipping areas.

RL's can be used individually or in multiples with different types of suspension systems.

Walker engineers can supply the complete system including spreader beam, power supply, controller and battery safety back-up.

RL Series Magnets available for:

Single and Multiple Plate Lifting, Hot Plate Lifting

Electropermanent designs also available.

- Various Suspension Options
- Voltages: 115 or 230 VDC
- Copper wound coils and Class "H" Insulation
- Fully welded heavy duty magnet case
- 50% Duty Cycle - Standard
- 75% Duty Cycle - Optional
- 100% Duty Cycle - Optional
- Waterproof outlet box & lead cable
- Flux Enhancement Pole Configurations

| SPECIFICATIONS | | | | | | | | | |
|----------------|--------------|----------------------------|---------------------------|---------------|-------------|--------------|----------------------------|---------------------------|---------------|
| MODEL | | | | | MODEL | | | | |
| Width (in.) | Length (in.) | Rated Lift Capacity (lbs)* | Power Consumption (WATTS) | Weight (lbs.) | Width (in.) | Length (in.) | Rated Lift Capacity (lbs)* | Power Consumption (WATTS) | Weight (lbs.) |
| 8 | 16 | 0 - 3,500 | 400 | 150 | 16 | 32 | 0 - 14,000 | 1,300 | 800 |
| | 24 | 0 - 5,000 | 550 | 225 | | 48 | 0 - 21,000 | 2,000 | 1,400 |
| | 32 | 0 - 7,000 | 725 | 300 | | 64 | 0 - 28,000 | 2,600 | 1,800 |
| | 40 | 0 - 8,750 | 950 | 350 | | 80 | 0 - 35,000 | 3,300 | 2,200 |
| | 48 | 0 - 10,000 | 1,000 | 400 | 20 | 40 | 0 - 21,000 | 2,250 | 1,400 |
| 12 | 24 | 0 - 8,000 | 700 | 325 | | 60 | 0 - 31,500 | 3,200 | 2,200 |
| | 36 | 0 - 12,000 | 1,150 | 425 | | 66 | 0 - 34,500 | 3,500 | 2,400 |
| | 48 | 0 - 16,000 | 1,250 | 600 | | 80 | 0 - 42,000 | 4,500 | 2,850 |
| | 60 | 0 - 20,000 | 1,750 | 800 | | 100 | 0 - 52,500 | 5,500 | 3,250 |
| | 72 | 0 - 23,500 | 2,300 | 1,000 | 26 | 48 | 0 - 39,000 | 3,100 | 2,400 |
| 84 | 0 - 27,000 | 2,500 | 1,200 | 60 | | 0 - 49,500 | 3,800 | 2,900 | |

*Lifting capacities are based on optimum conditions. Variables in the materials or magnetic system can affect performance.

Walker Magnetics

60 Solferino St.
Worcester, MA 01604
800-962-4638 (508)853-3232
FAX (508)852-8649

Walker National

2195 Wright Brothers Ave
Columbus, OH 43217
(614)492-1614 FAX (614)492-1618

Walker Magnetics National

901 Arvin Avenue
Stoney Creek, Ont.
L8E 5N9 Canada
(905)643-3338 FAX (905)643-6111

Walker Magnetics

60 Solferino St.
Worcester, MA 01604
800-962-4638 (508)853-3232
FAX (508)852-8649

Walker National

2195 Wright Brothers Ave
Columbus, OH 43217
(614)492-1614 FAX (614)492-1618

Walker Magnetics National

901 Arvin Avenue
Stoney Creek, Ont.
L8E 5N9 Canada
(905)643-3338 FAX (905)643-6111