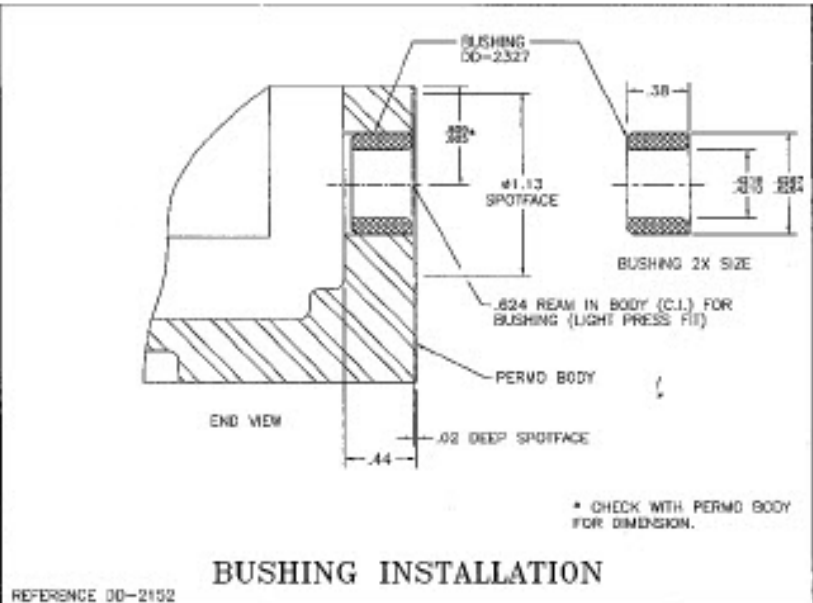


**CAMLINK GRINDING**



**BUSHING INSTALLATION**

TOP VIEW

SEAL DD1222 (INCLUDED WITH HANDLE ASSEMBLY)

**SPARE PARTS**

Ceramox Perno Handle Repair  
(For sizes 5 x 10 thru 10 x 16 only)

1. Handle Assembly 5B-88984-length of chuck EX 6 x 12 = 88984-12 (Includes handle body CC609 or CC13172, handle rod DD1102-length, knob DD3527, seal DD1222, taper pin #2 taper x 7/8 LG.)
2. Crankshaft 39-DD999
3. Bushing 39-DD2327
4. Camlink 08-IXMY777

NO.	REVISION	DATE	BY	ISSUED FOR	DATE	BY
<b>CERAMOX HANDLE REPAIR PARTS AND REPAIR PROCEDURE</b>						
DD15452.DWG		DATE		ISSUED FOR		NO.
DRAWN BY: LABC		DATE: 06/22/73		ISSUED FOR: 00-15452		NO.:
CHECKED:						~
APPROVED:						

PRODUCT: ~  
**O.S. WALKER, INC.**  
Worcester, MASS 01605

Notes: This document contains proprietary information and such information may not be disclosed in whole or in part without permission from the O.S. Walker Co. Inc.

TOLERANCES: Unless otherwise specified tolerances on finished part shall be as follows: DEC. DIM of 1 Place ± .04, DEC. DIM of 2 Places ± .015, DEC. DIM of 3 Places ± .004, Flatness .001 per 12", Parallelism .001 per 12", Frictional RMS ± .015, Concentricity .001, Squareness .001 per 12", Finish 125 RMS, Angles ± 30', Sheet metal tolerance per DD-13322, Remove sharp edges, Tols. not qualitative, Do not escape print, All Tols. total indicator reading.

Paint ~  
SOM ~  
Sinker Part ~  
Stock Mat ~  
Weight LBS

Sheet 1 of 1